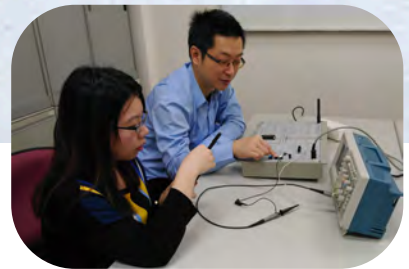
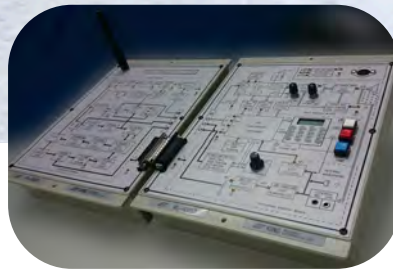
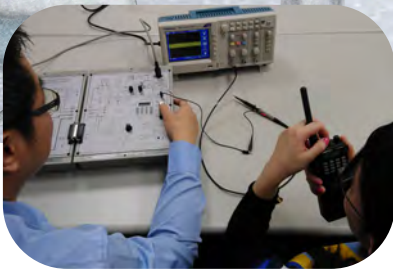
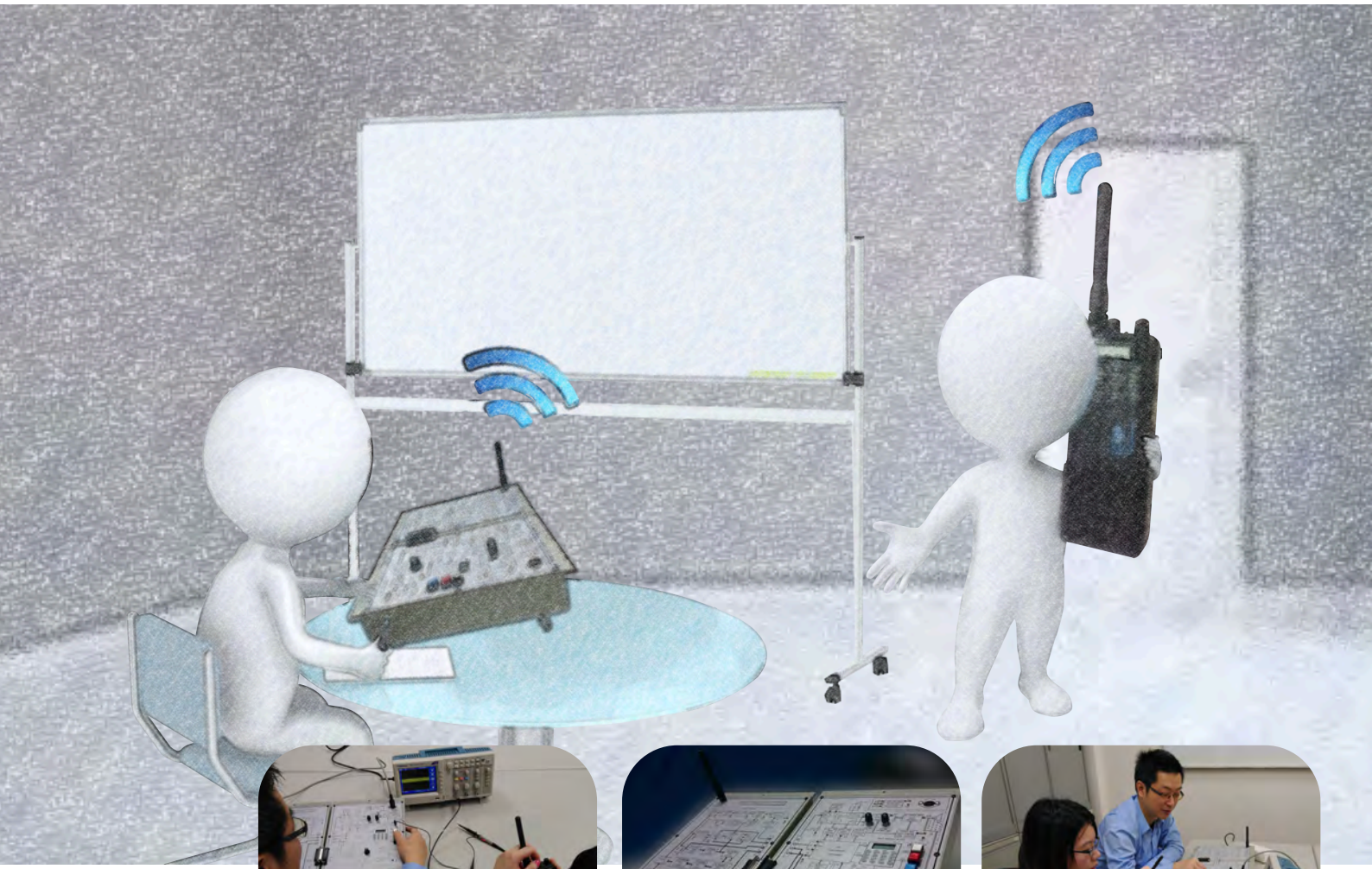


KL-900B

Analog Communication System



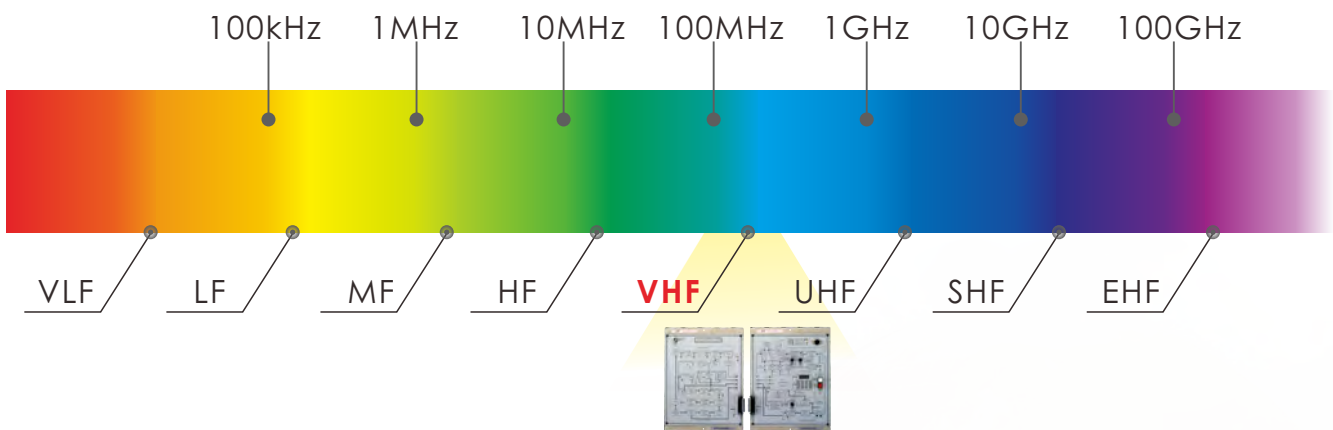
KL-900B Analog Communication System discloses the inner structure of a 144MHz VHF band walkie-talkie. The circuitry of the walkie-talkie is shown in blocks : receiver block, transmitter block, audio amplifier block, and microphone amplifier block.

Block diagrams are printed clearly on the panel of each module, giving students a comprehensive view of how walkie-talkie operates.

Features

1. With module-based experiment circuits, provides a comprehensive telecommunication-related course for beginners
2. The walkie-talkie of the system uses the 144 MHz wireless half-duplex transmission mode.

The Radio Spectrum



Simplified Block Diagram of Transceiver System

