

Innovative IoT Experiment Platform

IOT-100



- With the most popular wireless protocols and sensors WiFi/Bluetooth/ZigBee/EnOcean and 19 sensors with complete tutorial IOT-100 adopts 4 different wireless protocols: ZigBee, Bluetooth, WiFi, and EnOcean. Users can select one (or more) wireless sensing technology and transmit data to wireless integrated gateway via MQTT protocol for observation and control.



WiFi



ZigBee®



Bluetooth®



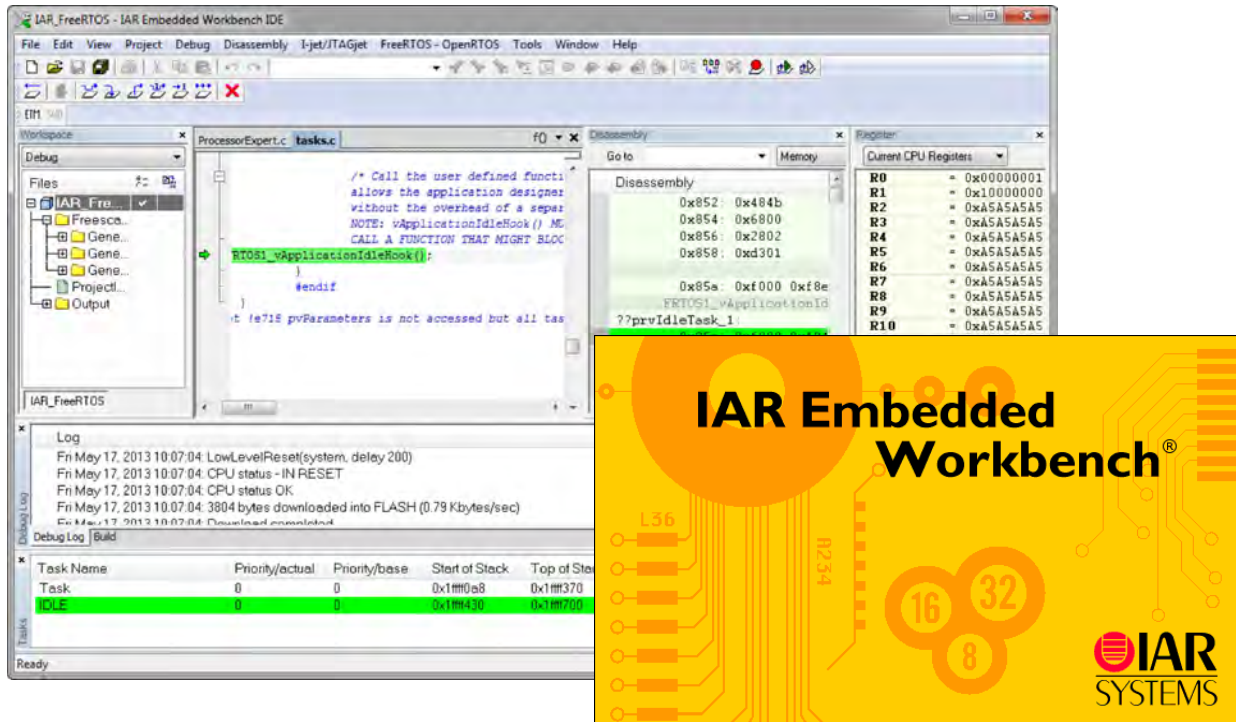
enocean

● The Simplified Learning Topology

Internet of Things



IoT Control Technology



IAR Embedded Workbench is a software that offers development tools for embedded systems.

IoT-100 Integrates ITS-200 IPv6 Experimental Equipment

In order to allow users to know more about IoT network technology and communication protocols, IOT-100 integrates ITS-200 IPv6 experimental equipment for users to construct and simulate Internet or Intranet environment via ITS-200 router devices to achieve information transmission in IoT.

