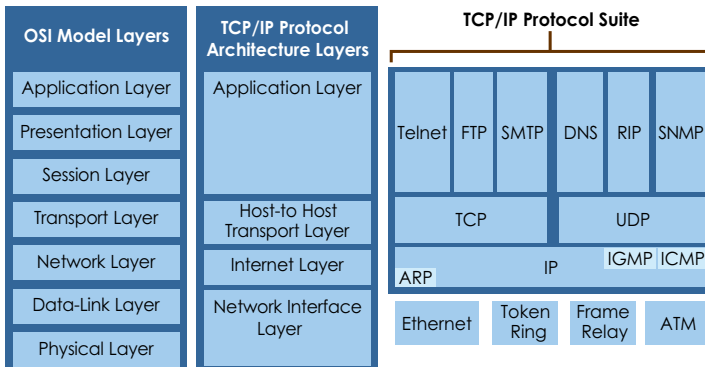


ITS-101A *Internet TCP/IP Protocol Training System*

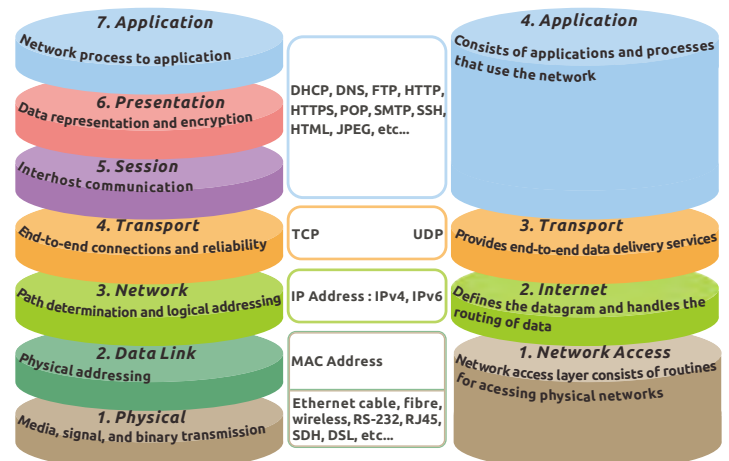


The Internet has permeated among our daily life in every aspect, and it provides the fundamental connection with many state-of-the-art technologies. The core technology of the Internet is TCP/IP protocol and it is a set of rules that governs the communications between devices on a network. Understanding TCP/IP protocol suite is crucial to users of the Internet at all levels and it facilitates better application of the Internet. Internet TCP/IP Protocol Training System is designed to meet this need.

TCP/IP Protocol Architecture



OSI Model vs. TCP/IP Model

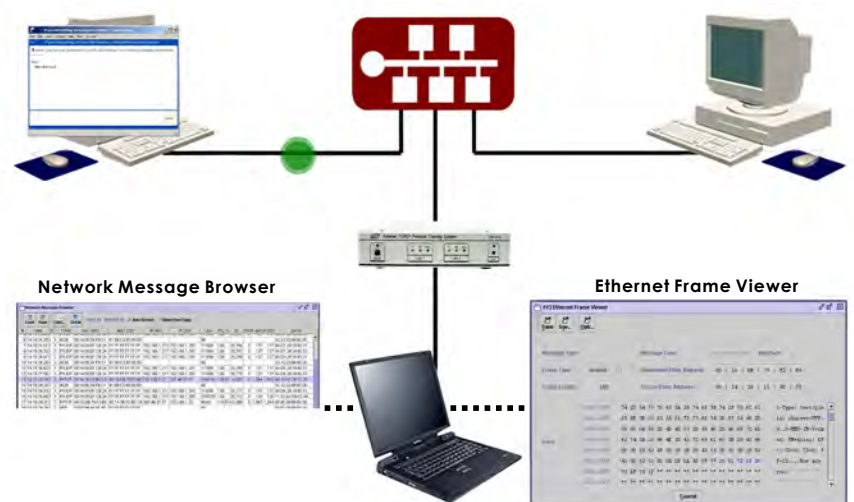


OSI is a reference model for how applications can communicate over a network, there are seven layers of OSI model. The second to the fourth layers play the key role in operating system kernels such as Linux and Windows, which are difficult for most users to understand.

Internet TCP/IP Protocol Training System not only reveals the inner workings of TCP/IP protocol, but also provides methods to modify the behavior of TCP/IP protocol for experiment purposes, in order to help users in learning the functions and relationships about IP, ICMP, TCP, and UDP.

System Features

1. Real-time package monitor
2. Packet generator
3. Congestion generator
4. Programmable router



Experiment Example : ARP

